

AI Occupancy Detection Application Camera Detects Congestion Level

4K Network Camera with AI engine
WV-X2571LN / WV-X2271L / WV-X1571LN

5MP Network Camera with AI engine
WV-X2551LN / WV-X2251L / WV-X1551LN



Video Insight 7



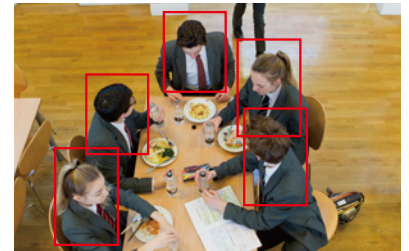
Extension software WV-XAE207W adds functionality to your network camera with AI engine (sold separately). Install the software on the camera to enable the occupancy detection function to send notifications to external systems (network disk recorder or Video Insight VMS) when set conditions are met.

Occupancy Detection

- (1) Detecting the congestion via network camera with AI engine enables that information to be used to direct visitors in advance or help store staff work more efficiently.
- (2) The function can be used right away by simply installing the app on a network camera with AI engine and setting detection conditions (detection area, number of people, time) on the app's settings screen.

*Caution

Motion may be difficult or impossible to detect and errors may occur due to installation conditions such as brightness of the area and subject movement or due to the usage environment. Please check the on-site environment before adopting this system.
- May fail to detect or detect with reduced accuracy due to uneven light, changes in lighting, jewelry worn, fast subject movement, strong external light sources, etc.
- People lying down or who have fallen down may not be detected correctly.

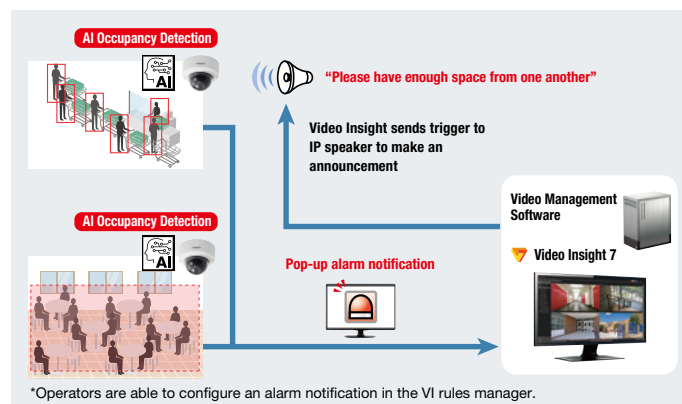


*Detection frame display on WV-ASM300 is scheduled to be supported in June 2021.
*Example image of detection processing.

System Connection Example

● Video Insight Video Management Software

Video Insight (VMS) can be linked and incorporated into a monitoring system.

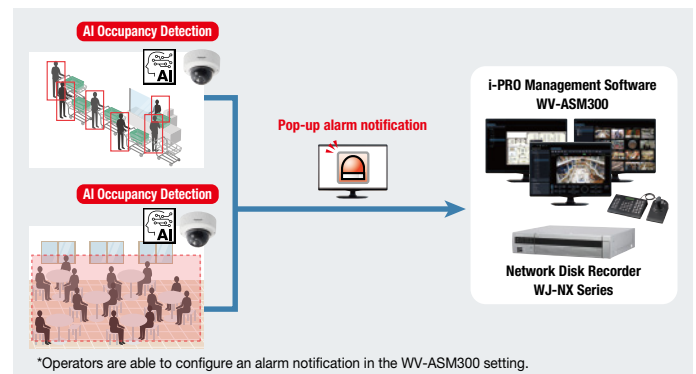


● WJ-NX Series Network Disk Recorder

The WJ-NX series network disk recorder and i-PRO management software WV-ASM300 can be linked and incorporated into a monitoring system.

*Message ID settings are required on the WJ-NX series network disk recorder and WV-ASM300.

*WJ-NX series network disk recorder and WV-ASM300 detection frame display are not supported.



USES



Shop (at cash register)

- Be careful to keep social distance using screen display or announcement if more than a certain number of people are present.
- Automatically call for more cashiers.



Hospital reception

- Notify guests of congestion level at entrance and prompt them to visit again later.



Elevator hall

- Notify of congestion level in front of elevator.
- [Elevator hall]**
Warn when more than a certain number of people are in a set area.



School cafeteria

- Announce congestion level by monitor at cafeteria entrance.

Specifications

*Caution

An extension software license is required for each camera to activate AI Occupancy Detection App.

See the instruction manual for more information regarding restrictions.

Occupancy detection method	To detect if the set number of people is exceeded continuously in the target area during the set time period.
Body size	Shoulder width: 32-1400 pixels (FHD* model); 43-1866 pixels (5M model); 64-2800 pixels (4K model) *FHD Network Camera with AI engine will be launched near future
Detectable angle of view	Depression angle 45° or less
Maximum count of people	40
Number of set areas	Up to 4

Number of people detected	1-40 people/area
Detection time	1-600 sec/area
HTTP Connection Settings	4 transmission destinations; transmission interval: 1/5/10/15/30/60 sec; SSL supported
Installation location	Indoors (Including the under-eave area not exposed to direct sunlight)
Illuminance	50 lux or above (around the subject)

Related Products

4K Network Camera with AI engine

WV-X2571LN

WV-X2271L

WV-X1571LN

(i-PRO white)



WV-X2571LN



WV-X2271L



WV-X1571LN

5MP Network Camera with AI engine

WV-X2551LN

WV-X2251L

WV-X1551LN

(i-PRO white)



WV-X2551LN



WV-X2251L



WV-X1551LN

Network Disk Recorder

WJ-NX400

WJ-NX300

WJ-NX200

Supported Version : v. 4.00 or later



WJ-NX400



WJ-NX300



WJ-NX200

Video Management Software

Video Insight 7

Supported Version : v.7.8.3 or later



i-PRO Management Software

WV-ASM300

Supported Version : v. 3.00 or later



Trademarks and registered trademarks

– All trademarks identified herein are the property of their respective owners.

Important

- Safety Precautions : Carefully read the Basic Information, Installation Guide and Operating Instructions before using this product.
- Panasonic i-PRO Sensing Solutions Co., Ltd. cannot be held responsible for the performance of the network and/or other manufacturers' products used on the network.
- When monitoring remotely, please pay attention to the network design. For details, please contact your local Panasonic i-PRO sales representatives.
- All images are for illustrative purposes only. • Specifications are subject to change without notice.

Panasonic

Panasonic Corporation

Panasonic i-PRO Sensing Solutions Co., Ltd.

<https://ipro.panasonic.com>

<https://security.panasonic.com>

<https://www.linkedin.com/company/i-pro-sensing-solutions-co-ltd/>

(2A-275L)