



## 49-inch Class 4K UHD LCD Display TH-49SQE1W

### Product specification (design and specification are subject to change without notice)

#### ■ DISPLAY PANEL

|                                       |                                     |
|---------------------------------------|-------------------------------------|
| Screen Size (Diagonal)                | 49-inch class (1232.0 mm)           |
| Panel type / Backlight                | ADS / Direct-LED                    |
| Aspect ratio                          | 16:9                                |
| Effective Display Area (W x H)        | 1073.8 x 604.0 mm (42.47" x 23.77") |
| Resolution (H x V)                    | 3840 x 2160                         |
| Brightness (Typ)                      | 500 cd/m <sup>2</sup>               |
| Contrast Ratio                        | 1200:1                              |
| Dynamic Contrast Ratio                | 50000:1                             |
| Max. Display Colors                   | Approx. 1.06 Billion                |
| Response Time (Typ)                   | 8 ms (G to G)                       |
| Viewing Angle (Horizontal / Vertical) | 178° / 178° (CR>10)                 |
| Panel Life Time* <sup>1</sup> (Typ)   | Approx. 50000 hours                 |
| Panel Surface Treatment               | Anti-glare type (Haze 1%)           |

\*<sup>1</sup> When the panel lifetime is at 50% of the brightness under the condition of 25 degrees Celsius (+/- 2 degrees Celsius).

#### ■ CONNECTION TERMINAL

|                         |   |   |
|-------------------------|---|---|
| HDMI IN                 | HDMI Connector x 4  | Compatible with HDCP 2.2  |
| DisplayPort 1.2a Input  | x 1   | Compatible with HDCP 1.3  |
| DisplayPort 1.2a Output | x 1   | Compatible with HDCP 1.3  |
| PC IN                   | Mini D-Sub 15-pin (DDC2B) x 1   | RGB : 0.7 V <sub>p-p</sub> (75 Ω)<br>HD/VD : TTL (High impedance) |
| SERIAL IN               | D-sub 9pin (Female) x 1, RS-232C Compatible   |   |
| IR IN                   | Stereo mini jack (M3) x 1   |   |
| AUDIO IN                | Pin jack (L / R) x 1  |   |
| AUDIO OUT               | Stereo mini Jack (M3) x 1<br>SPDIF x 1  |   |
| LAN                     | RJ45 x 1  |   |
| USB                     | USB connector Type-A (5 V/0.5 A) x 2, Type-C (5 V/1.5 A) x 1<br>(Internal) Type-A x 1       |   |
| SLOT                    | Intel <sup>®</sup> SDM specification<br>Corresponding size SDM-S / SDM-L, Supply power 40 W |   |
| Wi-Fi                   | Built-in  |   |

#### ■ AUDIO

|                  |                |
|------------------|----------------|
| Built in Speaker | 16 W [8W + 8W] |
|------------------|----------------|

#### ■ ELECTRICAL

|                                    |  |
|------------------------------------|--|
| Power Requirements                 | AC 110 - 127 V 50 Hz / 60 Hz<br>AC 220 - 240 V 50 Hz / 60 Hz                                 |
| Power Consumption                  | 186 W (SLOT not in use:133 W)  |
| On Mode Average Power Consumption* | 109 W  |
| Power Off Condition                | 0 W  |
| Stand-by Condition                 | Approx. 0.5 W  |
| Apparent power                     | 186 W (SLOT not in use:133 W) (AC 110-127 V)<br>188 W (SLOT not in use:135 W) (AC 220-240 V) |
| Energy efficiency class for Europe | < G  |

\*Based on IEC 62087 Ed.2 measurement method

#### ■ MECHANICAL

|  |  |
|--|--|
| Dimension (W x H x D) Not including remote controller sensor box | 1102 x 635 x 105 mm (43.37" x 24.98" x 4.11")  |
| Dimension (W x H x D) Including remote controller sensor box     | 1102 x 652 x 105 mm (43.37" x 25.67" x 4.11")  |
| Weight   | 13 kg (28.7 lbs)   |
| Carton Dimensions (W x H x D)                                    | 1215 x 775 x 165 mm (47.84" x 30.52" x 6.50")  |
| Gross Weight   | 18 kg (39.7 lbs)   |
| Cabinet Material   | Front: Metal / Side, Back: Plastic   |
| Bezel Color  | Black  |
| Bezel Width  | T/R/L 11 mm (0.43") B 14.4 mm (0.57")  |
| Pitch for Wall-Hanging   | VESA Compliant 200 x 200 mm (7.9" x 7.9") (Installed by: M6 screws / Screw hole depth 12 mm (0.48")) |

\*Remote IR sensor is detachable.

#### ■ INSTALLATION

|               |   |
|---------------|---|
| Orientation*  | Landscape / Portrait  |
| Tilting Angle | Landscape : 20 degrees forward<br>Portrait : 20 degrees forward |

\*Please contact your sales representative with regard to the tilt angle before installation.

#### ■ ENVIRONMENTAL

|                       |   |
|-----------------------|---|
| Operating Environment | Temperature : 0°C to 40°C (32°F to 104°F) <sup>*1</sup> ; 0°C to 35°C (32°F to 95°F) <sup>*2</sup><br>Humidity : 20% to 80% (No condensation) |
| Storage Environment   | Temperature : -20°C to 60°C (-4°F to 140°F)<br>Humidity : 20% to 80% (No condensation)  |

\*<sup>1</sup> : for up to 1400 m (4593 ft) altitude \*<sup>2</sup> : for between 1400 m (4593 ft) and 2800 m (9186 ft) altitude

• Depending on the temperature or humidity conditions, uneven brightness may be observed. This is not a malfunction.

• This unevenness will disappear while applying current continuously. If not, consult the distributor.

|          |              |
|----------|--------------|
| UPC Code | 885170428065 |
|----------|--------------|

**MAIN FEATURE**

|                                     |         |
|-------------------------------------|---------|
| Wireless Display                    | Yes     |
| USB Media Player                    | Yes     |
| Data Cloning                        | USB     |
| Multi display settings              | Yes     |
| Power on Screen Delay               | Yes     |
| Auto setting                        | Yes     |
| No signal power off                 | Yes     |
| HDMI power management (HDMI-Wakeup) | Yes     |
| Button lock                         | Yes     |
| Operation level control             | Yes     |
| Set up timer                        | Yes     |
| SERIAL control (RS232C)             | Yes     |
| LAN control                         | Yes     |
| HDMI CEC Compatible                 | Yes     |
| Crestron Connected™                 | Yes     |
| SNMP                                | Yes     |
| PJLink™                             | Yes     |
| Multi Monitoring & Control Software | Yes     |
| Memory Viewer                       | Yes     |
| HTML5 Browser                       | Yes     |
| HTML5 Browser auto-Launch           | Yes     |
| Real Time Clock                     | Yes     |
| Pixel shift                         | Yes     |
| OSD Rotation                        | Yes     |
| USB Auto-play (Type A&C)            | Yes     |
| Operating Time*                     | 24h/day |

\*Displaying a still image for a long time may cause burn-in (image persistence artifacts), it could be mitigated when display video image.

**INCLUDED ACCESSORIES**

- Remote Control x 1 - IR Sensor x 1 - IR Sensor Holder
- Screw (for IR Sensor's Holder) x 2 - Power Supply Code
- Batteries x 2: AA/R6/LR6 type - Cable Clamper x 3
- Spacer x 4 - Screw for spacer x 4

**STANDARD (CERTIFICATIONS)**

|                       |  |
|-----------------------|--|
| SAFETY REGULATIONS    | EU/USA<br>CB Report (LVD; IEC62368-1 2nd Edition + EU/USA Deviation)<br>EU Deviation : EN62368-1:2014 2nd Edition<br>USA Deviation : UL62368-1-2014, 2nd Edition<br>UL Certification   |
| RADIATION REGULATIONS | EU : EMC test report [Class-A]<br>(CE; EN55032:2012/EN61000-3-2:2014/<br>EN61000-3-3:2013/EN55024:2010<br>IEC61000-4-2:2008 IEC61000-4-3:2010<br>IEC61000-4-4:2012 IEC61000-4-5:2005<br>IEC61000-4-6:2013 IEC61000-4-8:2009<br>IEC61000-4-11:2004)<br>US : FCC [Class-A] |

**WIRELESS LAN FUNCTION**

|                        |  |
|------------------------|--|
| Compliance standard    | IEEE 802.11 a/b/g/n Dual (Wireless LAN Standard protocol)<br>Wi-Fi CERTIFIED |
| Channel                | IEEE802.11a/b/g/n  |
| Communication distance | Approx. 30 m (Depends on usage environment)                                  |

**REMOTE CONTROL TRANSMITTER**

|                        |  |
|------------------------|--|
| Power Requirements     | DC 3 V (AA Size batteries x 2)           |
| Operating distance     | Approx. 7 m (22.9 ft)*                   |
| Weight                 | Approx. 111 g (4 oz) including batteries |
| Dimensions (W x H x D) | 51 x 161 x 27 mm (2" x 6.4" x 1.1")      |

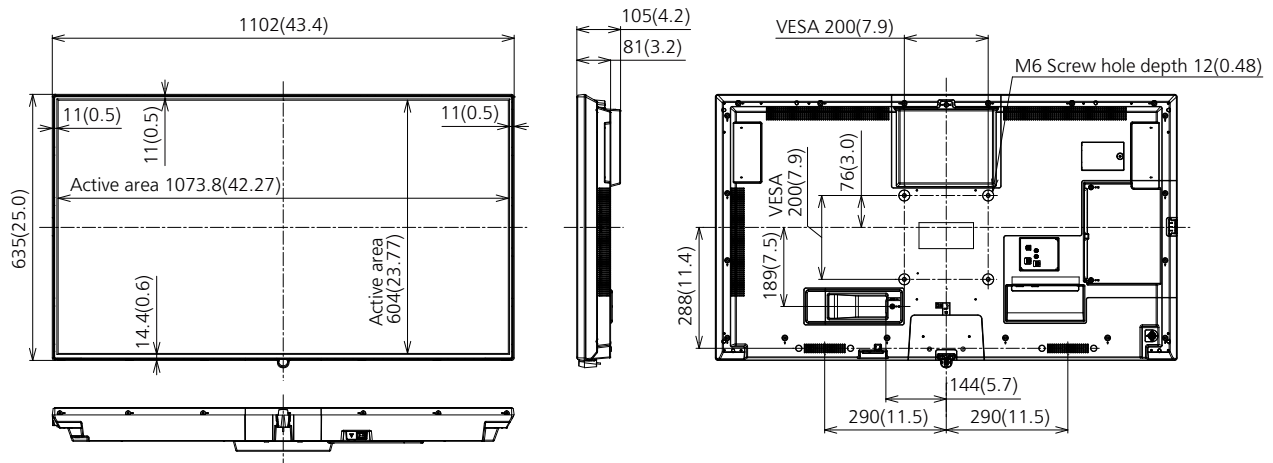
\*When operated directly in front of the IR sensor.

**OPTIONAL ACCESSORIES**

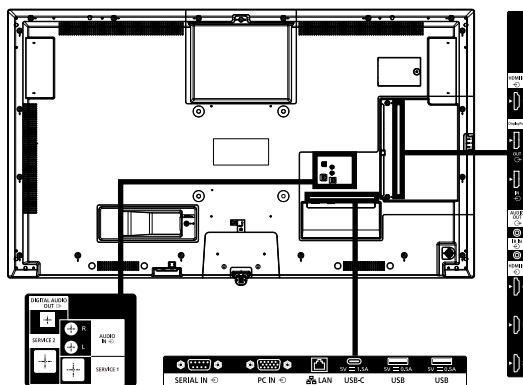
|   |   |
|---|---|
| Early Warning Software*<br>Basic license / 3-year license | ET-SWA 100 / 105series<br>(Depending on the license type, the symbol at the end of the part number is different.) |
| Wireless Presentation System                              | Receiver Board TY-SB01WP  |

**DIMENSIONS**

Cautions: This drawing is not a scale  
Units : mm (inches)



**CONNECTION TERMINAL**



\* Specifications and appearance are subject to change without notice.

 Supported signals & TV format

| Corresponding Signal | Resolution (Dot)               | Scanning frequency |               | Dot Clock frequency (MHz) | Format <sup>2</sup> | Plug and Play supported signal |                 |        |    |
|----------------------|--------------------------------|--------------------|---------------|---------------------------|---------------------|--------------------------------|-----------------|--------|----|
|                      |                                | Horizontal (kHz)   | Vertical (Hz) |                           |                     | HDMI                           | DP <sup>3</sup> | Type-C | PC |
| 480/60i              | 720(1440) x 480i <sup>11</sup> | 15.73              | 59.94         | 27                        | H/DP/TypeC          | ○                              | ○               | ○      | -  |
| 576/50i              | 720(1440) x 576i <sup>11</sup> | 15.63              | 50            | 27                        | H/DP/TypeC          | ○                              | ○               | ○      | -  |
| 480/60p              | 720 x 483                      | 31.47              | 59.94         | 27                        | H/DP/TypeC          | ○                              | ○               | ○      | -  |
| 576/50p              | 720 x 576                      | 31.25              | 50            | 27                        | H/DP/TypeC          | ○                              | ○               | ○      | -  |
| 720/60p              | 1280 x 720                     | 45                 | 60            | 74.25                     | H/DP/TypeC          | ○                              | ○               | ○      | -  |
| 720/50p              | 1280 x 720                     | 37.5               | 50            | 74.25                     | H/DP/TypeC          | ○                              | ○               | ○      | -  |
| 1080/60i             | 1920 x 1080i                   | 33.75              | 60            | 74.25                     | H/DP/TypeC          | ○                              | ○               | ○      | -  |
| 1080/50i             | 1920 x 1080i                   | 28.13              | 50            | 74.25                     | H/DP/TypeC          | ○                              | ○               | ○      | -  |
| 1080/24p             | 1920 x 1080                    | 27                 | 24            | 74.25                     | H/DP/TypeC          | ○                              | ○               | ○      | -  |
| 1080/25p             | 1920 x 1080                    | 28.13              | 25            | 74.25                     | H/DP/TypeC          | ○                              | ○               | ○      | -  |
| 1080/30p             | 1920 x 1080                    | 33.75              | 30            | 74.25                     | H/DP/TypeC          | ○                              | ○               | ○      | -  |
| 1080/60p             | 1920 x 1080                    | 67.5               | 60            | 148.5                     | H/DP/TypeC          | ○                              | ○               | ○      | -  |
| 1080/50p             | 1920 x 1080                    | 56.25              | 50            | 148.5                     | H/DP/TypeC          | ○                              | ○               | ○      | -  |
| 2K/24p               | 2048 x 1080                    | 27                 | 24            | 74.25                     | H/DP/TypeC          | -                              | -               | -      | -  |
| 2K/25p               | 2048 x 1080                    | 28.13              | 25            | 74.25                     | H/DP/TypeC          | -                              | -               | -      | -  |
| 2K/30p               | 2048 x 1080                    | 33.75              | 30            | 74.25                     | H/DP/TypeC          | -                              | -               | -      | -  |
| 2K/48p               | 2048 x 1080                    | 54                 | 48            | 148.5                     | H/DP/TypeC          | -                              | -               | -      | -  |
| 2K/60p               | 2048 x 1080                    | 67.5               | 60            | 148.5                     | H/DP/TypeC          | -                              | -               | -      | -  |
| 2K/50p               | 2048 x 1080                    | 56.25              | 50            | 148.5                     | H/DP/TypeC          | -                              | -               | -      | -  |
| 3840 x 2160/24p      | 3840 x 2160                    | 54                 | 24            | 297                       | H/DP/TypeC          | ○                              | ○               | ○      | -  |
| 3840 x 2160/25p      | 3840 x 2160                    | 56.25              | 25            | 297                       | H/DP/TypeC          | ○                              | ○               | ○      | -  |
| 3840 x 2160/30p      | 3840 x 2160                    | 67.5               | 30            | 297                       | H/DP/TypeC          | ○                              | ○               | ○      | -  |
| 3840 x 2160/60p      | 3840 x 2160                    | 135                | 60            | 594                       | H/TypeC             | ○                              | -               | ○      | -  |
| 3840 x 2160/50p      | 3840 x 2160                    | 112.5              | 50            | 594                       | H/TypeC             | ○                              | -               | ○      | -  |
| 4096 x 2160/24p      | 4096 x 2160                    | 54                 | 24            | 297                       | H/DP/TypeC          | ○                              | ○               | ○      | -  |
| 4096 x 2160/25p      | 4096 x 2160                    | 56.25              | 25            | 297                       | H/DP/TypeC          | ○                              | ○               | ○      | -  |
| 4096 x 2160/30p      | 4096 x 2160                    | 67.5               | 30            | 297                       | H/DP/TypeC          | ○                              | ○               | ○      | -  |
| 4096 x 2160/60p      | 4096 x 2160                    | 135                | 60            | 594                       | H/TypeC             | ○                              | -               | ○      | -  |
| 4096 x 2160/50p      | 4096 x 2160                    | 112.5              | 50            | 594                       | H/TypeC             | ○                              | -               | ○      | -  |
| 640 x 400/70         | 640 x 400                      | 31.47              | 70.09         | 25.18                     | H/DP/TypeC/PC       | -                              | -               | -      | -  |
| 640 x 400/85         | 640 x 400                      | 37.86              | 85.08         | 31.5                      | H/DP/TypeC          | -                              | -               | -      | -  |
| 640 x 480/60         | 640 x 480                      | 31.47              | 59.94         | 25.18                     | H/DP/TypeC/PC       | ○                              | ○               | ○      | ○  |
| 640 x 480/67         | 640 x 480                      | 35                 | 66.67         | 30.24                     | H/DP/TypeC/PC       | -                              | -               | -      | -  |
| 640 x 480/73         | 640 x 480                      | 37.86              | 72.81         | 31.5                      | H/DP/TypeC/PC       | -                              | -               | -      | -  |
| 640 x 480/75         | 640 x 480                      | 37.5               | 75            | 31.5                      | H/DP/TypeC/PC       | -                              | -               | -      | -  |
| 640 x 480/85         | 640 x 480                      | 43.27              | 85.01         | 36                        | H/DP/TypeC/PC       | -                              | -               | -      | -  |
| 800 x 600/56         | 800 x 600                      | 35.16              | 56.25         | 36                        | H/DP/TypeC/PC       | -                              | -               | -      | -  |
| 800 x 600/60         | 800 x 600                      | 37.88              | 60.32         | 40                        | H/DP/TypeC/PC       | ○                              | ○               | ○      | ○  |
| 800 x 600/72         | 800 x 600                      | 48.08              | 72.19         | 50                        | H/DP/TypeC/PC       | -                              | -               | -      | -  |
| 800 x 600/75         | 800 x 600                      | 46.88              | 75            | 49.5                      | H/DP/TypeC/PC       | -                              | -               | -      | -  |
| 800 x 600/85         | 800 x 600                      | 53.67              | 85.06         | 56.25                     | H/DP/TypeC/PC       | -                              | -               | -      | -  |
| 832 x 624/75         | 832 x 624                      | 49.72              | 74.55         | 57.28                     | H/DP/TypeC/PC       | -                              | -               | -      | -  |
| 852 x 480/60         | 852 x 480                      | 31.47              | 59.94         | 34.24                     | H/DP/TypeC          | -                              | -               | -      | -  |
| 1024 x 768/50        | 1024 x 768                     | 39.55              | 50            | 51.89                     | H/DP/TypeC          | -                              | -               | -      | -  |
| 1024 x 768/60        | 1024 x 768                     | 48.36              | 60            | 65                        | H/DP/TypeC/PC       | ○                              | ○               | ○      | ○  |
| 1024 x 768/70        | 1024 x 768                     | 56.48              | 70.07         | 75                        | H/DP/TypeC/PC       | -                              | -               | -      | -  |
| 1024 x 768/82        | 1024 x 768                     | 65.55              | 81.63         | 86                        | H/DP/TypeC/PC       | -                              | -               | -      | -  |
| 1024 x 768/85        | 1024 x 768                     | 68.68              | 85            | 94.5                      | H/DP/TypeC/PC       | -                              | -               | -      | -  |
| 1066 x 600/60        | 1066 x 600                     | 37.64              | 59.94         | 53                        | H/DP/TypeC          | -                              | -               | -      | -  |
| 1152 x 864/60        | 1152 x 864                     | 53.7               | 60            | 81.62                     | H/DP/TypeC/PC       | -                              | -               | -      | ○  |
| 1152 x 864/70        | 1152 x 864                     | 63.99              | 70.02         | 94.2                      | H/DP/TypeC/PC       | -                              | -               | -      | -  |
| 1152 x 864/75        | 1152 x 864                     | 67.5               | 75            | 108                       | H/DP/TypeC/PC       | -                              | -               | -      | -  |
| 1152 x 864/85        | 1152 x 864                     | 77.09              | 85            | 119.65                    | H/DP/TypeC/PC       | -                              | -               | -      | -  |
| 1152 x 870/75        | 1152 x 870                     | 68.68              | 75.06         | 100                       | H/DP/TypeC/PC       | -                              | -               | -      | -  |
| 1280 x 720/60        | 1280 x 720                     | 44.76              | 60            | 74.48                     | H/DP/TypeC/PC       | -                              | -               | -      | ○  |
| 1280 x 768/50        | 1280 x 768                     | 39.55              | 49.94         | 65.18                     | H/DP/TypeC          | -                              | -               | -      | -  |
| 1280 x 768/60        | 1280 x 768                     | 47.7               | 60            | 80.14                     | H/DP/TypeC          | -                              | -               | -      | -  |
| 1280 x 768/60        | 1280 x 768                     | 47.78              | 59.87         | 79.5                      | H/DP/TypeC/PC       | -                              | -               | -      | -  |
| 1280 x 800/50        | 1280 x 800                     | 41.2               | 50            | 68.56                     | H/DP/TypeC          | -                              | -               | -      | -  |
| 1280 x 800/60        | 1280 x 800                     | 49.31              | 59.91         | 71                        | H/DP/TypeC          | -                              | -               | -      | -  |
| 1280 x 800/60        | 1280 x 800                     | 49.7               | 59.81         | 83.5                      | H/DP/TypeC          | -                              | -               | -      | ○  |
| 1280 x 960/60        | 1280 x 960                     | 60                 | 60            | 108                       | H/DP/TypeC/PC       | -                              | -               | -      | -  |
| 1280 x 960/85        | 1280 x 960                     | 85.94              | 85            | 148.5                     | H/DP/TypeC          | -                              | -               | -      | -  |
| 1280 x 1024/60       | 1280 x 1024                    | 63.98              | 60.02         | 108                       | H/DP/TypeC/PC       | ○                              | ○               | ○      | ○  |
| 1280 x 1024/75       | 1280 x 1024                    | 79.98              | 75.02         | 135                       | H/DP/TypeC/PC       | -                              | -               | -      | -  |
| 1280 x 1024/85       | 1280 x 1024                    | 91.15              | 85.02         | 157.5                     | H/DP/TypeC/PC       | -                              | -               | -      | -  |
| 1360 x 768/60        | 1360 x 768                     | 47.71              | 60.02         | 85.5                      | H/DP/TypeC          | -                              | -               | -      | -  |
| 1360 x 768/60        | 1360 x 768                     | 47.7               | 60            | 84.72                     | H/DP/TypeC          | -                              | -               | -      | -  |
| 1360 x 768/60        | 1360 x 768                     | 47.72              | 59.8          | 84.75                     | H/DP/TypeC          | -                              | -               | -      | -  |
| 1366 x 768/50        | 1366 x 768                     | 39.55              | 50            | 69.92                     | H/DP/TypeC          | -                              | -               | -      | -  |
| 1366 x 768/60        | 1366 x 768                     | 48.39              | 60.03         | 86.71                     | H/DP/TypeC          | -                              | -               | -      | -  |
| 1366 x 768/60        | 1366 x 768                     | 48                 | 60            | 72                        | H/DP/TypeC          | -                              | -               | -      | -  |
| 1366 x 768/50        | 1366 x 768                     | 39.56              | 49.89         | 69                        | H/DP/TypeC          | -                              | -               | -      | -  |
| 1366 x 768/60        | 1366 x 768                     | 47.71              | 59.79         | 85.5                      | H/DP/TypeC/PC       | -                              | -               | -      | -  |
| 1400 x 1050/60       | 1400 x 1050                    | 65.22              | 60            | 122.61                    | H/DP/TypeC          | -                              | -               | -      | -  |
| 1400 x 1050/75       | 1400 x 1050                    | 82.2               | 75            | 155.85                    | H/DP/TypeC/PC       | -                              | -               | -      | -  |
| 1440 x 900/60        | 1440 x 900                     | 55.47              | 59.9          | 88.75                     | H/DP/TypeC          | -                              | -               | -      | -  |
| 1440 x 900/60        | 1440 x 900                     | 55.92              | 60            | 106.47                    | H/DP/TypeC/PC       | -                              | -               | -      | -  |
| 1600 x 900/50        | 1600 x 900                     | 46.3               | 50            | 97.05                     | H/DP/TypeC          | -                              | -               | -      | -  |
| 1600 x 900/60        | 1600 x 900                     | 60                 | 60            | 108                       | H/DP/TypeC          | -                              | -               | -      | ○  |
| 1600 x 900/60        | 1600 x 900                     | 55.99              | 59.95         | 118.25                    | H/DP/TypeC          | -                              | -               | -      | -  |

| Corresponding Signal | Resolution (Dot) | Scanning frequency |               | Dot Clock frequency (MHz) | Format*2      | Plug and Play supported signal |      |        |    |
|----------------------|------------------|--------------------|---------------|---------------------------|---------------|--------------------------------|------|--------|----|
|                      |                  | Horizontal (kHz)   | Vertical (Hz) |                           |               | HDMI                           | DP*3 | Type-C | PC |
| 1600 x 900/60        | 1600 x 900       | 55.92              | 60            | 119                       | H/DP/TypeC    | -                              | -    | -      | -  |
| 1600 x 1200/60       | 1600 x 1200      | 75                 | 60            | 162                       | H/DP/TypeC/PC | -                              | -    | -      | ○  |
| 1680 x 1050/60       | 1680 x 1050      | 65.29              | 59.95         | 146.25                    | H/DP/TypeC    | -                              | -    | -      | -  |
| 1920 x 1080/60       | 1920 x 1080      | 66.59              | 59.93         | 138.5                     | H/DP/TypeC    | -                              | -    | -      | -  |
| 1920 x 1080/60       | 1920 x 1080      | 67.5               | 60            | 148.5                     | H/DP/TypeC/PC | ○                              | ○    | ○      | ○  |
| 1920 x 1200/60       | 1920 x 1200      | 74.04              | 59.95         | 154                       | H/DP/TypeC/PC | ○                              | ○    | ○      | ○  |

\*1 : Pixel-Repetition signal (dot clock frequency 27.0 MHz) only

\*2 : Following characters are abbreviation of input terminals.

H : HDMI (HDMI 1, 2, 3, 4)  
 DP : Display Port  
 Type-C : USB Type-C  
 PC : D-sub RGB

\*3 : Only for SQE1W

\*4 : Signals with ○ in the Plug and Play-supported signal column are the ones written in EDID (Extended Display Identification Data) of this unit.

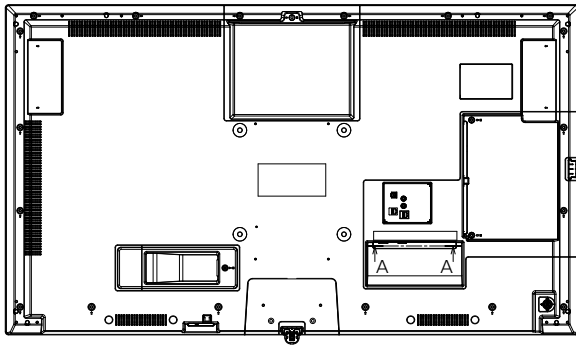
For signals without ○ in the Plug and Play-supported signal column, resolutions may not be selected on the PC side even if this unit supports those signals.

Note

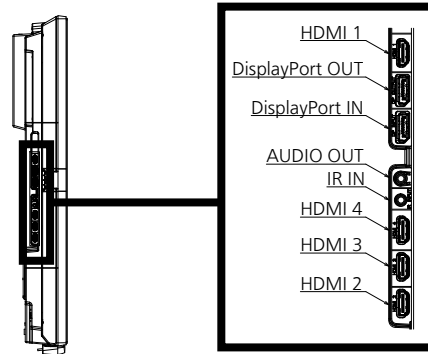
- An auto detected signal format may be differently displayed from the actual input signal.
- The i symbols (example 1080i) means Interlaced signal.

● Terminals

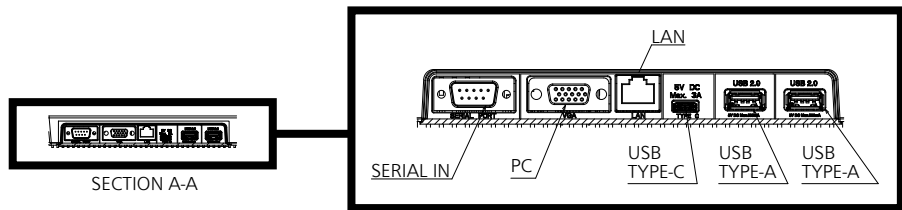
View from back



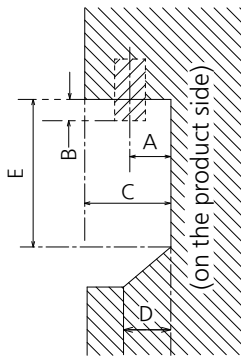
Magnified figure of terminal b



Magnified figure of terminal a



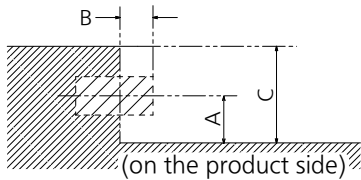
Sectional view of terminal a  
(SERIAL / PC / LAN / USB TYPE-C / USB TYPE-A)



Terminal a  
49SQE1W Terminal (Bottom) Units : mm (inch)

|   | SERIAL / PC | LAN        | USB TYPE-C | USB TYPE-A |
|---|-------------|------------|------------|------------|
| A | 9.3 (0.37)  | 9.7 (0.38) | 4.8 (0.19) | 6.6 (0.26) |
| B | 3.7 (0.15)  | —          | —          | —          |
| C | 26.1 (1.03) |            |            |            |
| D | 9.4 (0.37)  |            |            |            |
| E | 65.9 (2.59) |            |            |            |

Sectional view of terminal b  
(HDMI / DisplayPort / IR / AUDIO OUT)



Terminal b  
49SQE1W Terminal (Side) Units : mm (inch)

|   | HDMI        | DisplayPort | IR / AUDIO OUT |
|---|-------------|-------------|----------------|
| A | 7.1 (0.28)  | 5.1 (0.20)  | 6.2 (0.25)     |
| B | —           | —           | 0.8 (0.03)     |
| C | 24.6 (0.97) |             |                |

\*Since clearance between terminals are limited, some USB connector will not fit.  
Please check if USB memory devices you are going to use will fit, using the diagram above.